

# HERACLES



H220  
H220T  
H220E

# H220

## Standard version

Experience the H220 standard wheel loader, carefully designed to provide efficiency, comfort, and reliability in compact work environments. The H220 is equipped with a spacious and comfortable cabin, along with a reliable heating system to keep operators warm and productive, even in cold weather. Whether you're working on a chilly morning or in freezing winter conditions, this machine ensures a comfortable workspace to keep you focused and efficient throughout the day.



# H220T

## Telescopic version

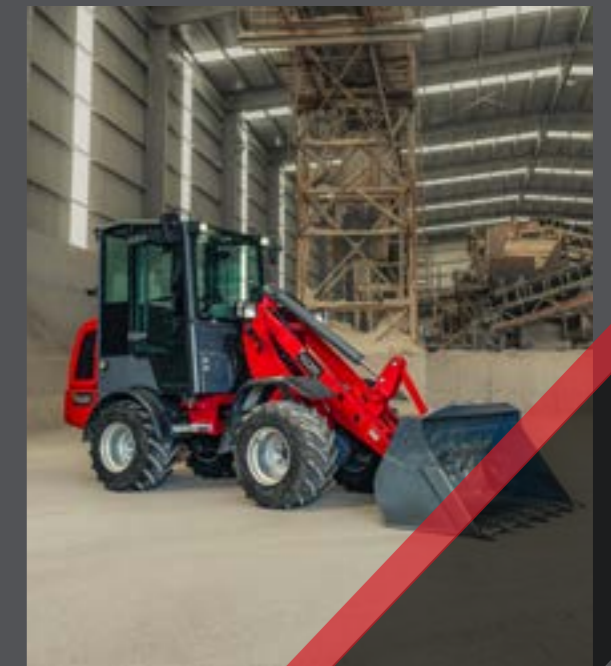
The H220T telescopic wheel loader is designed to provide exceptional reach and flexibility, making it the perfect choice for handling demanding tasks. With its extended boom, the H220T can effortlessly lift and move materials to higher elevations. This machine is ideal for both construction and agricultural applications, whether you're stacking materials, loading trucks, or managing tasks in tight or elevated spaces. The combination of power and precision in the H220T ensures reliable and efficient performance in a variety of work environments.



# H220E

## Electric version

Introducing the H220E green electric wheel loader, setting new standards in sustainability and performance. This eco-friendly machine operates silently and produces zero emissions, making it ideal for urban areas, residential neighborhoods, and environmentally sensitive locations. The H220E delivers powerful performance while reducing your carbon footprint. Its advanced electric design ensures smooth and efficient operation, allowing you to handle demanding tasks without sacrificing productivity.





Our H220 series comes with a wide selection of attachments, designed to meet a variety of operational needs and make your work easier and more efficient. Whether you need buckets for fast and reliable material handling, pallet forks for accurate load placement, or pitchforks and bale grabbers for agricultural tasks, the H220 is equipped to handle it all with ease.

For even more versatility, we also offer attachments like snow blades for clearing paths, sand spreaders for managing icy conditions, and sweepers for keeping work areas clean. These options make the H220 a truly adaptable machine, capable of tackling a wide range of tasks across different industries and environments.

With such a diverse selection of attachments, the H220 series is built to deliver top performance in farming, construction, landscaping, and beyond. Whatever the job, this loader ensures you have the tools you need to get it done quickly and efficiently.

Each H220 model is equipped with a durable hydraulic quickhitch system, designed to provide unmatched versatility and efficiency. With a wide range of attachments available, the H220 can easily handle a variety of tasks, making it a reliable choice for different work environments.

We offer both standard configurations and custom options to meet specific regional needs, ensuring the loader can be tailored to suit your unique requirements. Choose from a diverse selection of attachments, including buckets for material handling, pallet forks for precise lifting, and snow blades for winter tasks.

The H220's adaptability and performance make it the perfect tool for farms, construction sites, and other demanding applications, helping you work smarter and more efficiently in any environment.





Discover the outstanding versatility and performance of the H220 series wheel loaders, designed to handle a wide variety of tasks with ease. These powerful and reliable machines are equipped with a hydraulic quickhitch system, making it quick and easy to switch between attachments for different jobs. This feature ensures maximum efficiency and adaptability, no matter the task or work environment. The H220 series offers an extensive range of attachments to meet your specific needs. Use buckets for efficient material handling, pallet forks for precise load placement, pitchforks and bale grabbers for agricultural tasks, snow blades for winter maintenance, sand spreaders for landscaping, and sweepers to keep your work areas clean. These attachments allow the H220 to excel in a variety of roles, making it a valuable tool for any project.





| Technical data              | H220                                    |
|-----------------------------|---|
| Engine model                | YANMAR 4TNV88-BIGE   YANMAR 4TNV88-BLDW |
| Fuel type                   | Diesel                                  |
| Cylinders                   | 4                                       |
| Displacement cc             | 2190                                    |
| Emission standards          | Eu stage v   EU Stage III               |
| Max engine output           | 18.5@1500rpm   36.5@3000rpm             |
| Max engine torque           | 141@1500rpm   129.5~141.1@1800rpm       |
| Cooling system              | Water                                   |
| Operating voltage           | 12 V                                    |
| Battery                     | 75 Ah                                   |
| Operating weight            | 2 600 kg                                |
| Max tipping load            | 1 500 kg                                |
| Max lifting capacity        | 1 200 kg                                |
| Cab type                    | Cabin                                   |
| Travel speed                | 0~25 km/h                               |
| Steering angle              | 45                                      |
| Turn radius in/out          | 1410/3025 mm                            |
| Standard tires              | 10.0/75-15.3                            |
| Fuel tank capacity          | 50 L                                    |
| Hydraulic oil tank capacity | 50 L                                    |
| Working hydraulic flow      | 40 L/min                                |
| Working hydraulic pressure  | 200 bar                                 |
| Transmission type           | Hydrostatic                             |

| H220T                                   | Technical data       | H220E                  |
|---|----------------------|------------------------|
| YANMAR 4TNV88-BIGE   YANMAR 4TNV88-BLDW | Battery type         | Lithium iron phosphate |
| Diesel                                  | Battery capacity     | 32.2 kWh               |
| 4                                       | Drive motor          | 30 kw                  |
| 2190                                    | Pump motor           | 28                     |
| Eu stage v   EU Stage III               | Charging voltage     | 110/220 (380) V        |
| 18.5@1500rpm   36.5@3000rpm             | Charging time        | 2 h                    |
| 141@1500rpm   129.5~141.1@1800rpm       | Operating voltage    | 12 V                   |
| Water                                   | Battery              | 45 Ah                  |
| 12 V                                    | Operating weight     | 2 600 kg               |
| 75 Ah                                   | Max tipping load     | 1 500 kg               |
| 2 700 kg                                | Max lifting capacity | 1 200 kg               |
| 1 500 kg                                | Cab type             | Cabine                 |
| 1 200 kg                                | Travel speed         | 0~20 km/h              |
| Cabin                                   | Steering angle       | 45                     |
| 0~25 km/h                               | Turn radius in/out   | 1410/3025 mm           |
| 45                                      | Standard tires       | 10.0/75-15.3           |
| 1710/3270 mm                            | Hydraulic oil tank   | 50 L                   |
| 10.0/75-15.3                            | Hydraulic flow       | 60 L/min               |
| 50 L                                    | Hydraulic pressure   | 200 bar                |
| 50 L                                    | Transmission type    | Electric direct drive  |
| 40 L/min                                |                      |                        |
| 200 bar                                 |                      |                        |
| Hydrostatic                             |                      |                        |

| Tire Options |
|--------------|
| 10.0/75-15.3 |
| 31/15.5-15   |
|              |



For more information on how our loaders can optimize your operations and to explore the full range of available attachments.

**Webpage:**

[www.heracles.se](http://www.heracles.se)

**Email:**

[info@heracles-machinery.com](mailto:info@heracles-machinery.com)

**Click and watch:**

[H220E Presentation](#)

[H220 Presentation](#)

[H220 Cleaning Snow](#)

[H220T Animation](#)

[H220 Animation](#)

[H220E Animation](#)

[H220Plus Animation](#)

2026 - V1

# HERACLES